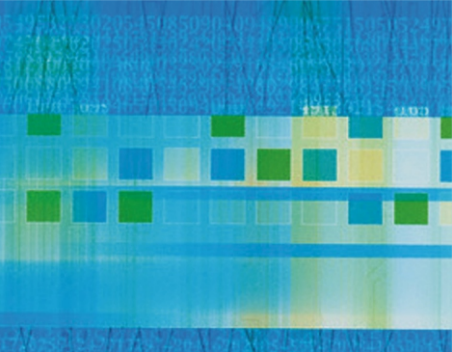




PROFILE PROFILE **PROFILE** PROFILE PROFILE



*We Design We Care We Design We Care
We Design We Care*



About us

*We Design We Care We Design We Care
We Design We Care*



DesignTree Service Consultants Pvt Ltd is a Multi – Disciplinary Engineering Consultancy company founded in March 2008 by dynamic and innovative professionals, establishing communication with professionalism for dynamic needs of construction industry focussing on design, growth and planning. DesignTree is evolved to provide one stop service/solution with a more focus on client requirements with responsive, agile, hands on and innovative approach to all prospective clients.

We at [DesignTree](#) is a group of engineers, from the structural and building services engineering industry, with a cumulative professional experience & served at senior positions in various organizations in India.

The practice at [DesignTree](#) is founded on the basis of providing creative, innovative and a high quality service to our clients. Up gradation of the practice will be implemented based on client recommendations and Experience.

Specilized in "Fast Track" projects, we have a flexible approach to the particular requirements of each project and can tailor the services offered accordingly. With our design management experience gained over years, we provide a specialist, practical solutions to the discerning projects.





Services Offered

*We Design We Care We Design We Care
We Design We Care*



DesignTree provides the professional and technical skills, to plan, design and supervise the construction of a wide range of Services from conception to delivery.

- Civil & Structural Engineering
- Public Health Engineering
- Fire & Life Safety System
- Electrical Engineering
- HVAC & IBMS Engineering
- Green Building Solutions
- Infrastructure Planning & Design

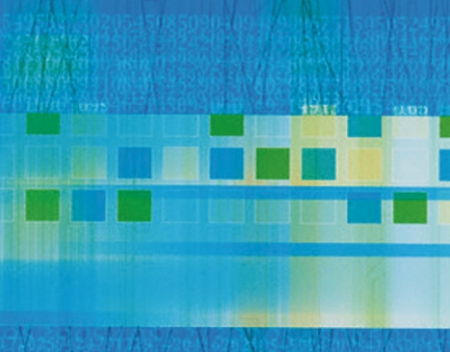
Civil & Structural Engineering

- Geotechnical Inputs
- Foundation Engineering
- Water Proofing Methodology
- Evaluation of Structural System & Value Engineering
- Analytical Modeling
- Quantity Survey and tendering
- Quality Assurance and Quality Control

Public Health Engineering

- Water Supply, Treatment, Distribution
- Plumbing Works
- Sewage Collection, Treatment, Disposal & Reuse
- Storm Water Drainage
- Rainwater Harvesting & Recharging
- Swimming Pool Systems
- Irrigation System





Services Offered

*We Design We Care We Design We Care
We Design We Care*



Fire & Life Safety System

- Hydrant Systems & Sprinkler Systems
- Water Mist Fire Suppression
- Wet & Dry Risers
- Fire Alarm & Voice Evacuation Systems
- Gas Suppression System
- Public Address System
- Requirements Related to FM Global/NFPA all International Norms.
- CCTV Access Control.

Electrical Engineering

- High Voltage Distribution
- HT Power Distribution
- Power Distribution with in Buildings
- Power Control Demand Control
- Energy Monitoring
- Emergency Lighting
- Telephone Systems & Structured Cabling
- Voice & Wireless Data Systems
- Captive / Standby Generation
- LT Power Distribution
- Uninterruptible Power Systems (UPS)
- Lighting Protection and Load Rolling System
- External Low Voltage Distribution
- Earthing System

HVAC & IBMS Engineering

- Air Conditioning & Refrigeration
- Fuel Storage & Distribution
- Medical & Industrial Gases
- Industrial Piping System
- Heating & Ventilation
- Steam & Condensate
- Vacuum & Compressed Air
- Building Management System





Services Offered

*We Design We Care We Design We Care
We Design We Care*



Green Building Solutions

- Sustainable Design and Construction.
- Massing Level Study for Daylight, Ventilation and passive cooling
- Water efficiency & net Zero Water management for new and existing project
- Waste Audit & Reduction program
- Energy simulation and on-site study for Lighting, HVAC & other equipment
- IAQ study for Office spaces
- Green Building Certification: Griha, IGBC, USGBC, EDGE

Infrastructure Planning & Design

- Preparation of feasibility studies
- Preparation of Detailed Project Reports for Roads, Bridges, Flyovers, Rail and Metro infrastructure
- Traffic and Transportation planning studies
- Detailed Planning & Design of infrastructure projects Viz
- Rail and Metro Infrastructure including Viaduct, Stations & Depot
- Roads
- Bridges & Flyovers
- Urban Infrastructure including site planning & Utilities like water supply, sewage & electrical





Deliverables

DesignTree committed for on-time and every-time performance and commitment towards deliverables so as to maintain synergy with the design development & construction.

Pre-tender stage

- Concept design
- Techno-commercial evaluation of various alternative solutions
- Recommendation of optimum solution based on client's requirements
- Blending of services requirements with building design
- Preparation of tender documents / drawings / bill of quantity
- Tender evaluation
- Project Co-ordination between various agencies

Post-tender stage

- Scrutiny of detailed engineering
- Selection & approval for material of construction
- Installation / commissioning supervision
- Project / contracts management
- Quantity survey
- Certification of bills at macro level
- Performance verification

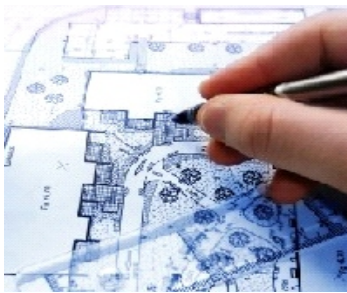
Working stage

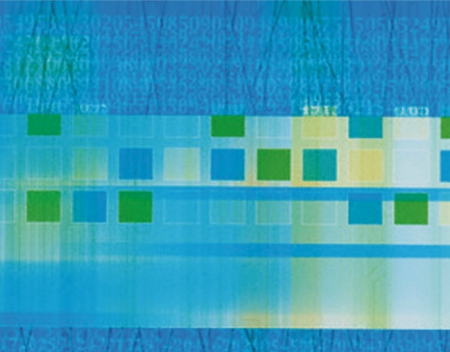
- Issue of working drawings
- Review of existing site conditions
- Enforcing safety plan
- Approval of method statements
- Advise on procurement of long lead items
- Conducting pre construction orientation programs
- Commencement of works periodical site visits
- Approval of construction material and test reports
- Co-ordination between clients, architects and other agencies

Handing over stage

- Inspection, testing and certification
- Manuals of systems, guarantees and other commercial documents
- Commissioning and testing
- Certification and handing over of work

*We Design We Care We Design We Care
We Design We Care*





Infrastructure

Ample office space which has accommodated 775+ Work Stations with sophisticated equipments, powerful broadband, LAN & Wifi Systems for good connectivity and option for progressive developments.

Manpower

DesignTree is equipped with the technically capable staff with hands on experience to tackle projects in a fast track mode with standard operative procedures.

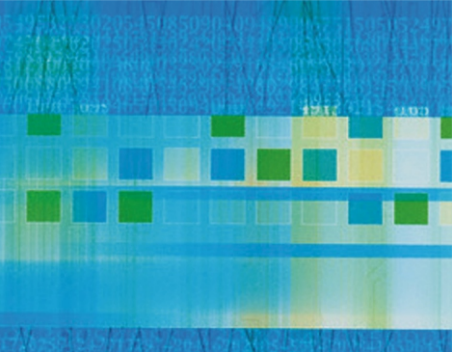
- Promoter Directors - 04
- Executive Directors - 03
- Associate Directors - 06
- Technical Directors - 13
- Associate Technical Directors - 13
- Team Leaders - 51
- Sr. Design Engineers - 140
- Design Engineers - 179
- CAD Engineers - 266
- Revit - 20
- Design Managers / Site Managers / QS - 54
- Admin/HR/Finance - 20
- IT - 02
- Total - 771

Software

- Drafting : Auto CAD, ZW CAD, Revit MEP
- Structural Modeling : STAAD Pro, ETAB'S, Framewin, RCDC
- 3D Modeling : AEC Collections (Revit)
- Piping : Loop & Sewer, EPA Net
- Accounting : TALLY ERP. 9
- HRMS : Saral Paypack
- Documentation & presentation : MS Office
- Pump Selection : Vender's Catalogue
- Heat load Calculate : Carrier E-20 HAP
- General Excavation : E-Servay
- Quantity Calculation Take Off : CUBIC Cost
- Reinforcement Steel Calculation : RGS REBAR (BBS)
- Heat Cooling Load Calculation : HAP
- Work Stations : 775 Nos

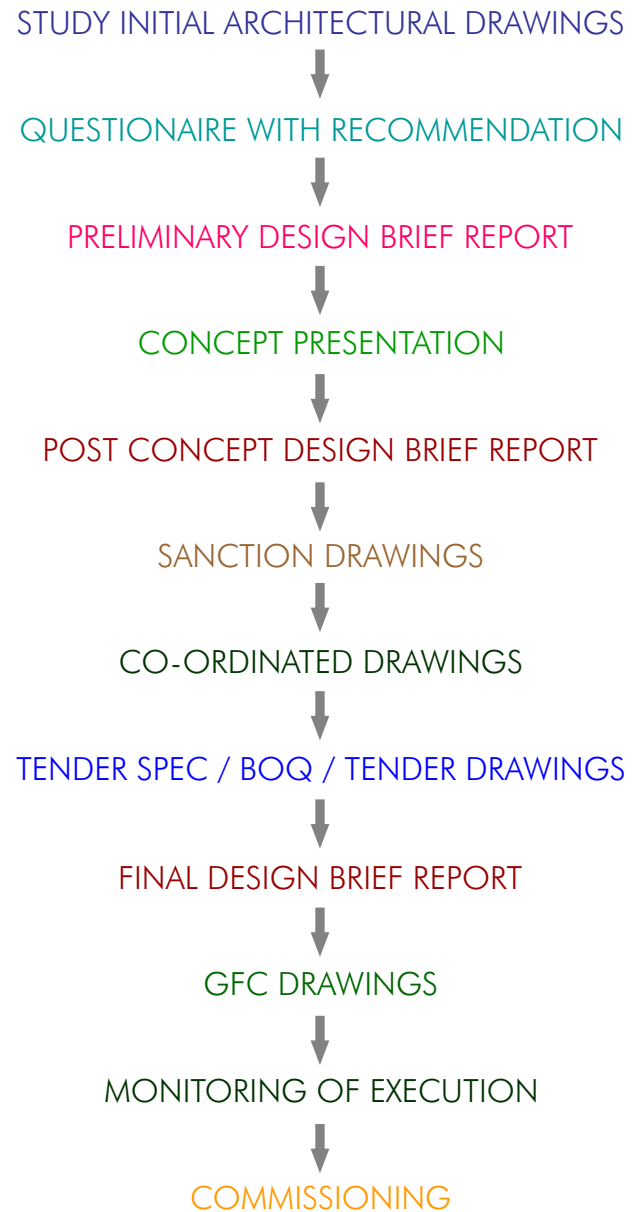
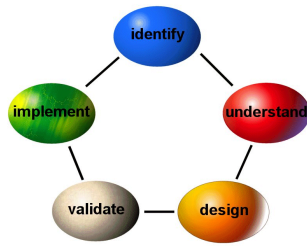
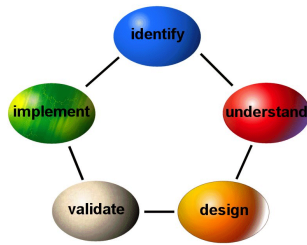
We Design We Care We Design We Care We Design We Care





Work Culture

*We Design We Care We Design We Care
We Design We Care*

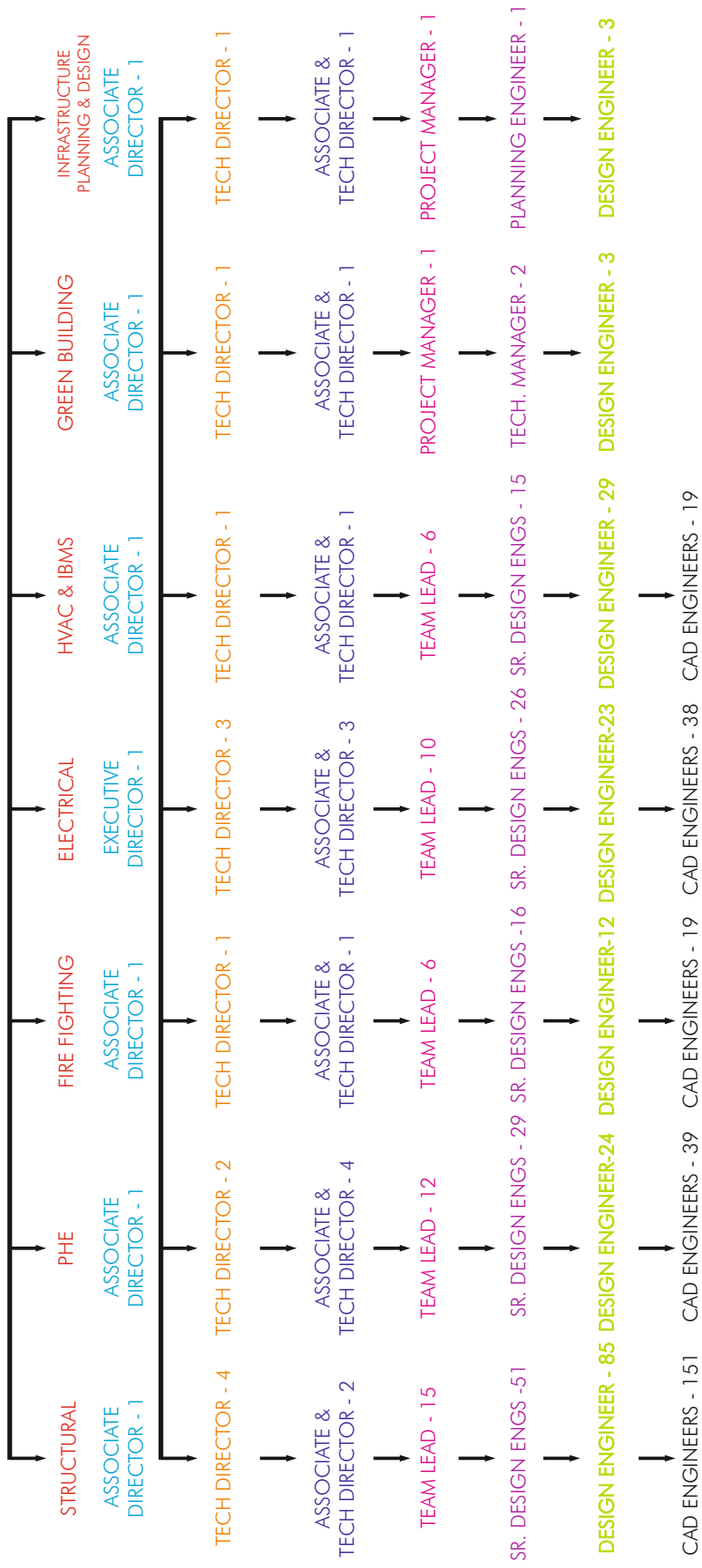




Organisation Structure

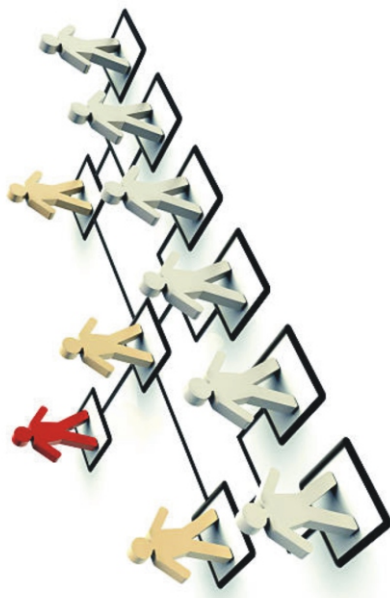
We Design We Care
We Design We Care

PROMOTER DIRECTORS - 4



- Executive Director / Branch Head - 2 Nos
- Design Managers / Site Managers / QS - 54 Nos
- Admin / HR / Finance - 15 Nos
- Revit - 20 Nos
- IT - 2 Nos

TOTAL TEAM STRENGTH - 771



Key Personnel

*We Design We Care We Design We Care
We Design We Care*



K Srinivasa Reddy
Managing Director

Mr. K. Srinivasa Reddy is a Co-founder and Managing Director of **DesignTree Service Consultants Pvt. Ltd.**, founded in 2008.

Mr. K. Srinivasa Reddy is a Civil Engineering graduate from Bangalore University in 1990.

He is a Member in following Professional Groups:

1. Chartered Engineer [India] - IEI
2. Fellow Member - IEI (The Institution of Engineers (India))
3. Life Member - ICI (Indian Concrete Institute)
4. Life Member - Instruct (Institute for Research Development and Training of Construction Trades and Management)
5. Professional Engineer - ECI (Engineering Council of India)
6. Professional Member of RICS (The Royal Institution of Chartered Surveyors)

Mr. K. Srinivasa Reddy has over **36 Years** of experience and expertise in providing engineering design consultancy services for sophisticated structures for the various projects not limiting to Multi-storied, Residential, Commercial, Hotels, Malls, Hospital, Industrial and Institutions etc,

With his unbridled attention towards the last detail and focus in making sure the assignments are being delivered to the client's satisfaction, He imbibes a culture of continual improvement among the work force through Critical design solutions, feasibility study, Construction friendly technologies, Latest management techniques, Project planning, Costing, QA/QC to deliver to client's delight than just to satisfy

Headquartered in Bangalore, DesignTree Service Consultants Pvt Ltd-DTSC has emerged as one of the front-runners in the consulting groups across all construction domains. The company began its operations in the year 2008 and it has already carved a niche for itself in the industry with all the major developers across the country and predominantly the southern markets patronizing their services. Currently with 750+ dynamic and innovative professionals, DesignTree is making progress in leaps and bounds. The company also has branches in other metropolitan cities of Chennai, Hyderabad, Kolkata, Mumbai, Pune and Vijayawada

Most recently the Consultants Review Magazine ranked DesignTree as one of the Top 25 Most Promising Consulting companies in India. He has been instrumental in achieving this success and stature that DesignTree Service Consultants Pvt Ltd has rightfully been accorded. Over the years under his able leadership the company has grown from strength to strength from providing design solutions to over 500 million Sq.ft of Residential and Commercial projects, to becoming a 750 plus work force company is a feat that has no parallel in the industry.

Key Personnel

*We Design We Care We Design We Care
We Design We Care*



B. O. Prasanna Kumar
Jt. Managing Director

Mr. B. O. Prasanna Kumar graduated in Civil Engineering in 1987 from Mysore University, obtained Master of Engineering in Environmental Engineering, in year 1989.

Over three and a half decades he is carrying out design services like water supply system, sewerage network, sewage treatment plants, water treatment plants, solid waste management, storm water management, swimming pools and filtration plants, industrial piping covering design of compressed air, vacuum, process cooling systems, fire protection & life safety.

He is a seasoned Consulting Engineer who has designed over thousand projects includes Highrise Buildings, Residential, IT Commercial, Data Centers, Mixed Used Townships, Hospitals, Hospitality, Malls, Multiplex, Retail and Industrial projects. He has won many accolades, major one is "Life Time Achievement Award" in Plumbing conferred by Indian Plumbing Association in year 2023. He delivered many talks on various topics of Plumbing, Sustainability, Sanitation and Environment.

Presently he is :

- Joint Managing Director, DesignTree Services Consultants Pvt Ltd
- Convener, Centre of Excellence, Indian Plumbing Association
- Member : CED 03/P1 and 03/P2 Water Efficient Products of BIS
- Co-convener, IPA Technical Committee
- Co-convener, Chapter-8, ECSBC by BEE Ministry of Power, GoI
- Ex-Chair & National Executive Committee Member, IPA Bengaluru Chapter
- Fellow Member, Association of Consulting Civil Engineers (India)
- Individual Member, World Plumbing Council
- IGBC Accredited Professional
- Industrial Expert, Visvesvaraya Technological University (VTU) for reviewing and revising Syllabus for UG and PG Programs
- Past Jury for Construction Times Awards, Mumbai

Key Personnel

*We Design We Care We Design We Care
We Design We Care*



B. E. Pruthviraj
Director

Mr. B.E. Pruthviraj, Co-founder and Director of **DesignTree Service Consultants Pvt. Ltd.**

Mr. B.E. Pruthviraj graduated in Civil Engineering in 1993 from Mysore University, obtained Master of Technology from Karnataka Regional Engineering College, Surathkal, Karnataka in 1997.

He is also a Fellow Member of ACCE(I) [Association Of Consulting Civil Engineers, India]

Upon post graduating in 1997, Mr. Pruthviraj joined Potential Service Consultants (P) Ltd, as Senior Design Engineer – Structures in 1998. During his tenure he worked on prestigious projects like TCS, Microsoft, Franklin Templeton, Mindspace, Pocharam IT Campus, SAP, Oracle Golfink IT Park, GE Campus, Knowledge Park, HCL and provided design solutions for high-rise structures.

In his **29 Years** of Experience He has in his credit a number of Multi-storied Structures for residential, commercial, hospital, hotels, Corporate, Industrial Structures and Institutional Projects. He has experience in structural steel and composite structures in co-ordination with reputed in Indian and International Architects. He was instrumental in providing design details for corporate jobs and complex projects. Mention worthy is TCS Chennai.

Key Personnel

*We Design We Care We Design We Care
We Design We Care*



B. Manjunath
Director

Mr. B. Manjunath is Co-founder and Director of **DesignTree Service Consultants Pvt. Ltd.**

Mr. B. Manjunath is a Civil Engineering graduate from Bangalore University in 1994.

He is also a Life Member and Member of National Executive Committee of Indian Plumbing Association (Bangalore Chapter) and an Individual Member of World Plumbing Council Fellow Member of Association of Consulting Civil Engineers, India (ACCE-I).

Upon graduating in 1994, Mr. Manjunath joined M/s. MECA engineers, Bangalore and later Potential Service Consultants Pvt Ltd. During his tenure with MECA and Potential, he worked on prestigious projects like Intel, Microsoft, Cisco, HP, TCS, Mind Space, Volkswagen, ITC, Gabriel India, INEL and provided design solutions for Plumbing, Sanitary, treatment plant, Industrial piping, Fire Protection and Life Safety System.

For over **32 Years** of his experience, he has been involved in carrying out design services for water supply system, sewerage network, water and waste water treatment plants, Fire Protection & Life Safety System, Industrial piping including steam boilers, compressed air, vacuum system, LPG bullets etc., for Residential campuses, Hotels, Hospitals, Factory complexes, Software Parks and Commercial buildings in coordination with reputed Indian and International Architects.

Key Personnel

We Design We Care We Design We Care
We Design We Care



Mr. Mitra Sripada
Executive Director - Electrical Services

Mr. Mitra Sripada has done his B.E. (Electrical) from Institution of Engineers, Calcutta in 1995.

Mr. Mitra Sripada has work experience of **31 years** in Electrical Engineering domain, related to Design Consultancy and Project Management for various IT, Industrial, Power Plants, Residential, Hospitals, Commercial complexes, Sub-stations & Data Centers.

Mr. Mitra Sripada is working in Designtree Service Consultants Pvt. Ltd., as an Associate Director, also served in various other organizations as a Vice President in M/s. Enersave Consultants Pvt. Ltd., as a Chief Engineer in M/s. Semac Consultants Pvt Ltd, as a Design Manager in M/s. Cadsys India Ltd, as a Chief Engineer in AR Consultants.

Projects Handled:

Developer Projects – Commercial & Residential: RMZ, Divyasree, Sattva Group, Brigade, Prestige, K Raheja, Cyber city, Mantri, LULU, Embassy, GAR Corporation, Assetz, Rajpushpa, Phoenix, Bagmane and Aparna Developers etc.

Built to Suit Design for: Intel SRR4, Novartis, Oracle, Texas Instruments, Dell, AP Secretariat etc.

Data Center's for: Sify Data center Chennai & Mumbai, STT (TATA) Data center in Bengaluru & Chennai.

Hospital Projects for: Yashodha Group, Basra Hospital (Iraq), Sparsh Group, Sakra Hospital, KBN Hospital, Thakshashila Hospital, IQ City Hospital, Agadi Sunrise

Institution Projects for: AMRITA University, Citrus HDFC School, CARE College, BNMIT Engineering College, RV Engineering College.

Hotel Projects for: Hoilday Inn-Tirupati, World Hotel-Bhubaneswar, Howard Johnson Hotel (HOJO), Bengaluru

Industrial projects: Triveniturbins, PEPSI process plants, Takenaka industries, TDPS industry, Merck Mellipore industries.

Interior Design Projects for: Dell, Microsoft, Google, Swiss Re, VM Ware, Mercedes Benz, Morgan Stanley, JPMC, KPMG, Accenture, ACS Xerox, Pega Systems, Dupont, IBM.

Specialised Projects: 66kV GIS Sub-station for Oracle, STT Data Center, 66kV conventional sub-station for L & T Infra, RMZ, Divyasree and 110kV GIS sub-station for Sify Data Center.

Key Personnel

We Design We Care We Design We Care
We Design We Care



Mr. Prashanth Gururaj
Associate Director & Fire & Life Safety

Mr. Prashanth Gururaj has done his B.E. (Mechanical) from Bangalore University, Karnataka in 2001.

With more than **25 years** of work experience in the field of Fire and Life Safety domain, designing vibrant and various kind of projects spanning across India and Abroad.

Mr. Prashanth Gururaj expertise extends to designing of Fire Fighting system, Fire protection system, Fire detection system, Various type of suppression system and also LV security system adapting various standards and codes like NBC, NFPA, FM Global, TAC and other International standards for spectrum of projects like Industries, Power plants, Sub stations, Commercial high rise buildings, Residential apartments, Multiplexes, Corporate buildings, Star hotels, Super specialty hospitals etc.

Mr. Prashanth Gururaj also served in various other organizations as General – Manager, Fire protection system in M/s. Entask Consultancy Services Pvt. Ltd., as Manager Design in M/s. Potential Service Consultants (P) Ltd., as Estimation Engineer in M/s. National Fire Fighting Manufacturing Co. FZCO (NAFFCO)., Dubai, U.A.E., As Contracts Engineer in M/s. Firepro Systems Pvt. Ltd. and as Site Engineer in M/s. Vijay Industries and Products.

Key Reference:

Built to Suit IT building – Intel SRR4, Novartise, Oracle, Texas Instruments, Dell, Accenture, Honeywell, Qualcomm, AP Secretariat ...

Various projects with builders – RMZ corp, Prestige constructions, K. Raheja corp, Divyasree Developers, Bagmane Developers, Salarpuria Sattva, Garden city developers, Cyber city developers, Aparna constructions, Mantri developers, Brigade group, Embassy group, LuLu group, Assetz group, RajPusha developers, Phoneix group, Ramky group, Mani group.

MNC Clients – Dell, Microsoft, Google, Swiss Re, VM Ware, Mercedes Benz, Morgan Stanley, JPMC, KPMG, Accenture, ACS Xerox, Pega Systems, Dupont, Goldman Sachs, CapGemini, IBM, Yahoo....

Hospitality chain – Yashodha Hospital, Basra Hospital (Iraq), Sparsh Hospital, Sakra Hospital, KBN Hospital, Thakshashila Hospital, IQ City Hospital, Agadi Sunrise Hospital...

Hotel Projects – Hoilday Inn-Tirupati, World Hotel-Bhubaneswar, Wadhwan Hotel-Mysor, Howard Johnson Hotel (HOJO), Bengaluru

Institutional Projects – AMRITA University, Citrus HDFC School, CARE College, BNMIT Engineering College, RV Engineering College.

Industrial developments – Triveni turbins, PEPSI process plants, Takenaka industries, TDPS industry, Merck Mellipore industries.

Data Centers – Qualcomm, Benagaluru, Sify Data center Chennai & Mumbai, STT (TATA) Data

Key Personnel

We Design We Care We Design We Care
We Design We Care



Mr. Kartick. V. Bhat

Associate Director - HVAC & IBMS Services
LEED AP - IGBC

Mr. Kartick V. Bhat has done his B.E. (Mechanical) from Mysore University in 2001.

LEED ACCREDITED PROFESSIONAL WITH **24 Years** of Experience in Sustainable HVAC & IBMS Systems.

Optimisation of Design by use of various software tools, Calculations. Skillset include Heat load analysis using HAP software, Payback analysis, Return of investment, Right technical selection and Accurate Bill of material preparation.

Diversified work experience in Different Organization's like in DVP consulting as a site engineer, Potential consultant as a Design Engineer, Entask as a General Manager. Vast knowledge and design experience in different nature of jobs from High Rise buildings to High end residential buildings, from complex Data centers to Lab applications. Hotels, IT buildings, Shopping malls, Hospitals etc.

Mr. Kartick V. Bhat also leads a team of 30+ engineers and has an in-house capacity to generate HVAC drawings in AUTODESK REVIT SOFTWARE LOD 300.

Recently Completed Jobs clientele list.

IT CAMPUS – ECOPOLIS, SATTVA MEGASOFT, SATTVA KNOWEDGE PARK ,GAR CORP , DIVYSHREE CAMPUS HYD , BRIGADE NALAPAD ,L& T CAMPUS BANGALORE , RAHEJA CAMPUS PORUR , RAHEJA CAMPUS 12D HYD ,RAHEJA CAMPUS HETRO

High end Residential – Crown group, Mantri Pinnacle, Mani Group Swarnamani & Shiromani at Kolkata.

Shopping malls – Binneypet shopping mall, Brigade Orion, PVP Square, Elements shopping mall.

Data centers – DELL Datacenter, Qualcomm 2 MW data center, Sify Data center, TCS.

Office IT buildings - SATTVA, BRIGADE GROUP, MANTRI GROUP –MANTRI PINNACLE. DELL Computers, VM WARE, MOTOROLA, INFOSYS, Cognizant, RMZ Group co-working spaces, Analog devices, SWISSRE.

Hospitals – Agadi hospitals, IQ City hospital, Sparsh super speciality hospital.

Hotels – Marriot, Holiday Inn GOA, H & J (HOWARD JOHNSON HOTEL)-, Wadhwan, Country Inn & Suites by Radisson, Mysore

Factories – PEPSICO industries Aurangabad and Hyderabad. Interior Jobs -IBM, Microsoft,Google, INTEL, Analog devices , Qualcomm, DELL Computers, Swissre.

Key Personnel

*We Design We Care We Design We Care
We Design We Care*



Sumita Dey
Technical Director &
Branch Head - Kolkata

Ms. Sumita Dey has done her M.E (Structural Engineering) from Jadavpur University in 1990. She emerged as a gold medallist.

She is empaneled as Class I structural engineer in KMC and New Town. She is member of IEI and Chartered Engineer.

She has **36 years** of experience in Structural design and has worked on various types of High rise Buildings.

She is working in **DesignTree as Branch Head of Kolkata**. Her career began with Development Consultants Pvt Ltd. where she was involved in the design of industrial projects. Subsequently she worked in Mani Group where she handled residential and commercial projects. She has also worked with Research Engineers Pvt Ltd. where she did research and development for STAAD software. She gained some teaching experience by working as lecturer in Jadavpur University and Institute of Engineers.

Projects Handled :

- Mani Square Mall, Kolkata
- Pink Square Mall, Jaipur
- The 42 – 60 storeyed Residential building on Chowringhee Road
- JW Marriot Hotel on EM bypass
- IQ City – 100 Acre Township project in Durgapur
- Godrej Joka, Kolkata
- Residential Development Project at Madhyamgram, Kolkata
- Rishi Pranaya at Kalikapur, Rajarhat Kolkata
- 4 Sight Grand Castle Block 5, Kolkata
- Southern Heights For DTC Projects Pvt. Ltd., Kolkata
- Peer Review for Meghmani Residential building at Nonadanga, Kolkata
- Mayukkh at DakshinRamchandrapur, Kolkata
- Mani casadona Residential Project, Kolkata
- Residential Project for Kish Developers at Lord Sinha Road, Kolkata

Key Personnel

We Design We Care We Design We Care
We Design We Care



Mr. Srinivas Rao. Bolimuntha
Associate Director - Structures

Mr. Srinivas Rao Bolimuntha has done his M.Tech in Structural Engineering from National Institute of Technology, Warangal, A.Pin 2001 .

He is working in **Design Tree Service Consultants Pvt. Ltd., as Associate Director-Structures**, also served in various other organizations as Structural Design Engineer in Sterling Consultants Pvt. Ltd, Bangalore, as Team leader in Potential Service Consultancy Bangalore and as Project Manager in TRC Worldwide Pvt.Ltd Bangalore. **He has 25 years of experience** in Structural Design and has worked on various types of High Rise Buildings.

He is exposed to working on various structural schemes and has been involved in various activities in the building design and construction industry including preparation of structural system in consultation with Clients and architects, preparation of structural model for analysis and design of all structural elements, preparation of structural drawings and monitoring the execution of work at site and has work experience for all types of projects including IT buildings, High rise Residential apartments, Multiplexes, Corporate offices, Hotels and Industrial structures, Hospitals, Institution.

Projects Handled :

- Express Avenue Mall, Chennai
- RMZ Kolkata
- Garuda Swagath Mall
- Tidel Park , Coimbatore
- Akme Residential Apartments
- RMZEcospace , Bangalore
- RMZ Icon, Pune
- RMZ Millennia, Chennai
- Manyata Campus , Bangalore
- IBM D3 , D4 & MLCP Software park
- RMZ Infinity, Bangalore
- Cisco Campus, Bangalore
- IBIS Hotel Pune
- GMR office Building Hyderabad
- Mind space
- CAP Gemini Chennai
- IBC knowledge center White field

Key Personnel

We Design We Care We Design We Care
We Design We Care



Ms. Nupur Risbood

Technical Director - Green Building Solutions

Ms. Nupur Risboodhas done her Bachelor of Architecture from Sardar Patel University, Gujarat in 2007.

She is working in **DesignTree as Technical Director – Green Building Solutions**. She has also served in various other organizations as a green facilitator including En3 Sustainability Solutions Pvt. Ltd. Godrej & Boyce Ltd, FreeSpanz Design Built Pvt. Ltd.

Ms. Nupur is an Architect with 19 years of experience in the green building industry. She is certified by **USGBC, GRIHA, IGBC WELLNESS** Institute. She is working to promote a greener BUILDING using sustainability building technologies.

Ms. Nupur started her career training under Laurie Baker in Kerala and got focused on creating sustainable buildings. Her experience in building certification for Green buildings further developed her strong desire to create sensitive buildings using technology and new age materials.

Projects Handled

- **Residential Projects** over 20+ certified projects including Tata, Embassy, L&T Reality projects
- Adarsh Greens Residentail at Gasti Kempanahalli, Bangalore
- **Commercial Projects** with developers like Prestige, RMZ, Karle for CS rating both for USGBC & IGBC rating
- LSR Tudor - IT Park at Kokapet, Hyderabad
- GAR CORP Software Technology Park, Hyderabad
- SIFY Data Center, Mumbai
- Garden City - Verde Commercial Building, Bangalore
- Sumadhara Residential Apartment, Bangalore
- **Office Interior:** with 40+ certified CI projects with 15 of those platinum rated.
- **Corporate Office** are unique in requirement and was involved in notable projects like L&T Training center in Lonavala, Titan HQ, DELL, SAP LABS, Prestige office.

Key Personnel

*We Design We Care We Design We Care
We Design We Care*



Mr. BN Chandrashekar

Associate Director -
Technical & Business Development

Mr. B N Chandrashekar has done his Masters of Engineering in Structural Engineering from Bangalore University in 1993 and Masters in Business Administration from Sikkim Manipal University.

Mr. BN Chandrashekar working in Design Tree Service Consultants as Associate Director, Technical & Business Development served in various other organizations as General Manager – Fosroc Chemicals India Pvt Ltd , Director – Fosroc Lanka Pvt Ltd .

He has more than **34 years** of experience in civil engineering domain related to providing concrete mix design consultancy services , water proofing systems and other special product services to enhance the durability of the structures - for the various projects not limiting to Multi-storied, Residential, Commercial, Hotels, Malls, Hospital, Industrial and infrastructure etc.

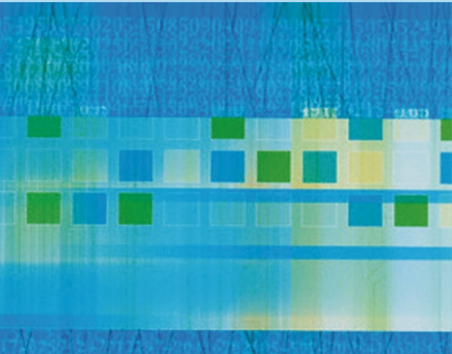
Projects Involved:

Residential Projects : Various developers – Brigade, Presteige, Adarsha, Lanco

Commercial Projects : RMZ, Karle , Prestiege , Shoba developers , IBC

Industries : TVS Group, Toyoto , Ashok Leyland, Maruthi, Neslte . JSW etc

Infraprojects : BMRCL, Konkan Railway, Mumbi Metro, DMRC



*We Design We Care We Design We Care
We Design We Care*

Vision

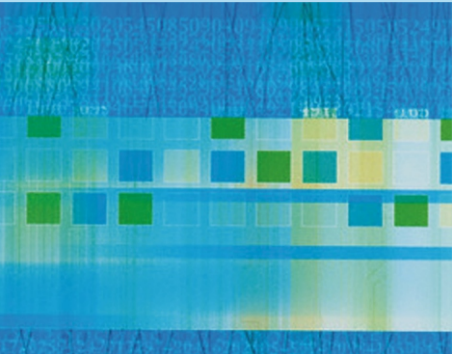
- To give innovative, cost effective and sustainable building solutions.
- To become one stop solution for all Engineering Consultancy services.
- To be among the foremost top Engineering consultants.
- To fulfill the social obligation towards the deprived.

Mission

- Provides outstanding design services to the satisfaction of clients in synchronization with Quality, Time and Cost parameters.
- Fulfills good careers and professional satisfaction for the team at DesignTree.

Our Goal

- ISO CERTIFICATION
- LEED PROFESSIONAL IN TEAM
- ENERGY MODELLING SOFTWARE
- VENTURE KNOWLEGDE PROCESS OUTSOURCE
- GROW TO 1000 TALENTED PROFESSIONAL TEAM.

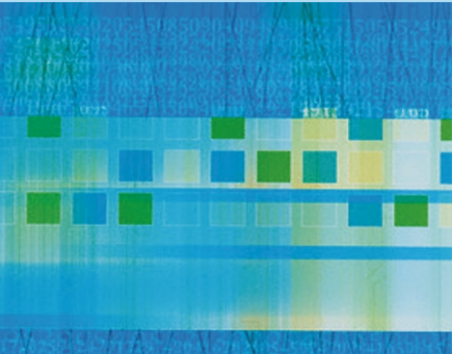


We Design We Care We Design We Care
We Design We Care

Clientele

"The reason we are here is only because of our Clients"

 <p>BRIGADE GROUP</p>	 <p>aurobindo REALTY INFUSING LIFE TO SPACES</p>	 <p>DivyaSree</p>	 <p>K RAHEJA CORP</p>
 <p>Architect Hafeez Contractor</p>	 <p>SATTVA TRUST, IT'S WHAT WE BUILD</p>	 <p>GAR</p>	 <p>MY HOME GROUP</p>
 <p>ireo THE BIG MULTIPLIER</p>	 <p>Assetz empowered innovation</p>	 <p>DSR BUILDERS & DEVELOPERS</p>	 <p>CONCORDE GROUP IF IT'S WORTH DOING... EXCEL</p>
 <p>Prestige GROUP Add Prestige to your life</p>	 <p>EIPL</p>	 <p>DLFA BUILDING INDIA</p>	 <p>HONER HOMES</p>
 <p>NSL GROUP GROWING WITH CARE</p>	 <p>PURAVANKARA</p>	 <p>RAJAPUSHPA PROPERTIES PVT. LTD Shaping Innovations</p>	 <p>APARNA Lead the future</p>
 <p>RSP</p>	 <p>PHOENIX Forever</p>	 <p>Godrej PROPERTIES</p>	

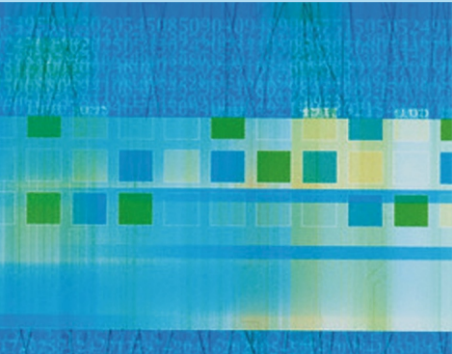


Clientele

"The reason we are here is only because of our Clients"

*We Design We Care We Design We Care
We Design We Care*



We Design We Care We Design We Care
We Design We Care

Clientele

"The reason we are here is only because of our Clients"

RESIDENTIAL

Projects Handled





Aparna Synergy
Hyderabad

Total Built-up Area 5.9 Million Sft
(15Towers+2Clubhouse/2B+G+27+Terrace)



EIPL Skyven
Hyderabad

Total Built-up Area 1.7 Million Sft
(Single Tower/4B+3S+3Clubhouse+56+T)



Mayfair Classic
Hyderabad

Total Built-up Area 5.4 Million Sft
(10Towers/4B+48Floors)



Moonglade EIPL
Hyderabad

Total Built-up Area 9.1 Million Sft
(8Towers/2B+5Podium+36+T)





MSN Realty
Hyderabad

Total Built-up Area 5.5 Million Sft
(5Towers/4B+G+57+T)



Pacifica Hillcrest
Hyderabad

Total Built-up Area 7.9 Million Sft
(3Towers/4B+S+38+T)





Brigade Utopia
Bangalore

Total Built-up Area 5.5 Million Sft
(8 Tower A-Q, Activity Center)



Prestige Raintreepark
Bangalore

Total Built-up Area 4.9 Million Sft
(2BF + GF+19UF's +TF)



Brigade Ramad
Chennai

Total Built-up Area 1.0 Million Sft
(5 Towers 2B+G+19UF's+TF)



Birla Trimaya - Phase III
Bangalore

Total Built-up Area 1.0 Million Sft
(BF+GF+14 UF's+TF)





Bhavya Construction
Hyderabad

Phase 1 & 2 - Total Built-up Area 5.4 Million Sft.
(13 Towers+3B+G+25 Floors)



KBR - Gateway Techpark Mixed Development
Hyderabad

Total Built-up Area 19.0 Lakh Sft
(3B+G+20 Floors)



Mantri Pinnacle Tallest Tower in South India
Bangalore

Total Built-up Area 5.4 Lakh Sft.
(2B+G+44 Floors)





Myhome Vipina
Hyderabad

Total Built-up Area 7.0 Million Sft
(8Towers/13B+ S+46+T, Clubhouse- 3B+G+5+T)



Nirvana Homes
Hyderabad

Total Built-up Area 1.9 Million Sft
(3Towers/3B+G+36+T)



NSL Uppal
Hyderabad

Total Built-up Area 4.8 Million Sft
(4Towers+2ClubHouse/Tower A & B(5B+ S+46+T)
(Tower C & D (5B+S+52+T) Clubhouse-5B+G+4+T)



Sri Srinivasa Infra
Hyderabad

Total Built-up Area 4.6 Million Sft
(6Towers/2C+3/4P+45 + T)





DSR Dommasandra
Bangalore

Total Built-up Area 3.0 Million Sft
(3BF+GF+30 UF's+TF)



Godrej Hoskote
Bangalore

Total Built-up Area 7.0 Million Sft
(2BF+GF+28 UF's+TF)



Kalyani Living Tree (R7) Aerospace
Bangalore

Total Built-up Area 5.6 Million Sft
(2BF+GF+28 UF's+ TF (10 Towers))



KRC Vivarea
Bangalore

Total Built-up Area 1.0 Million Sft
(2B+G+10floors+Terrace)





Srias Puppalagudda
Hyderabad

Total Built-up Area 3.7 Million Sft
(6Towers+1Clubhouse 4B+S+38/36+T, Club House-G+4+T)



Team 4 Arka
Hyderabad

Total Built-up Area 4.2 Million Sft
(6Towers/4B+S+43+T)



Vasavi Anandanilayam
Hyderabad

Total Built-up Area 11.7 Million Sft
(11Towers/3B+G+33+T)



Western Construction
Hyderabad

Total Built-up Area 4.3 Million Sft
(4 Towers 4 Cellars + G + 45 Floors + Club House)





Divyasree Republic of Whitefield **Bangalore**

Total Built-up Area 2.5 Million Sft
(13 Blocks+4B+G+19 Floors+Terrace)



L & T Raintree Boulevard **Bangalore**

Total Built-up Area 2.7 Million Sft
(18 Tower+4B+G +14 Floors+Terrace)



Salapurja Sattva (Magnus) Residential **Hyderabad**

Total Built-up Area 1.6 Million Sft
(4 Blocks+11 B+G+23 Floors+Terrace)



Prestige Bagamane Temple Bells **Bangalore**

Total Built-up Area 1.7 Million Sft
(5 Tower+2B+G+18 Floors)





Alliance Aspirational Homes
Hyderabad

Total Built-up Area 2.7 Million Sft
(3 Tower+2B+G+12 Floors)



Alliance Aspirational Homes
Chennai

Total Built-up Area 2.2 Million Sft
(6 Tower+B+19 Floors)



Aparna Sarovar Zicon
Hyderabad

Total Built-up Area 6.0 Million Sft
(14 towers / B+G+26+Clubhouse)



Assetz MARQ
Bangalore

Total Built-up Area 3.3 Million Sft
(2B+G+35 Floors+Terrace)





SPRE Park West
Bangalore

Total Built-up Area 5.5 Million Sft
(11 Tower+2B+G+34 Floors+Terrace+ Club House)



Rajapushpa Residential
Hyderabad

Total Built-up Area 9.1 Million Sft
(11 Tower+2B+G+39 Floors)



My Home Tarkshya
Hyderabad

Total Built-up Area 1.8 Million Sft
(4Tower+3B+G+32 Floors)



Godrej Azure
Chennai

Total Built-up Area 1.3 Million Sft
(6 Towers+B+G+18 Floors+Terrace)





Ireo Group Housing
Gurgaon

Total Built-up Area 2.5 Million Sft.
(4B+G+42 Floors)



Sumadhura Horizon
Hyderabad

Total Built-up Area 1.4 Million Sft
(4 Towers+2B+18 Floors)





DSR - The World
Hyderabad

Total Built-up Area 48 Lakh Sft
(9B+G+35 Floors)



Purvankara Atmosphere
Bangalore

Total Built-up Area 2.1 Million Sft
(3 Towers / 2B+G+34 Floors)



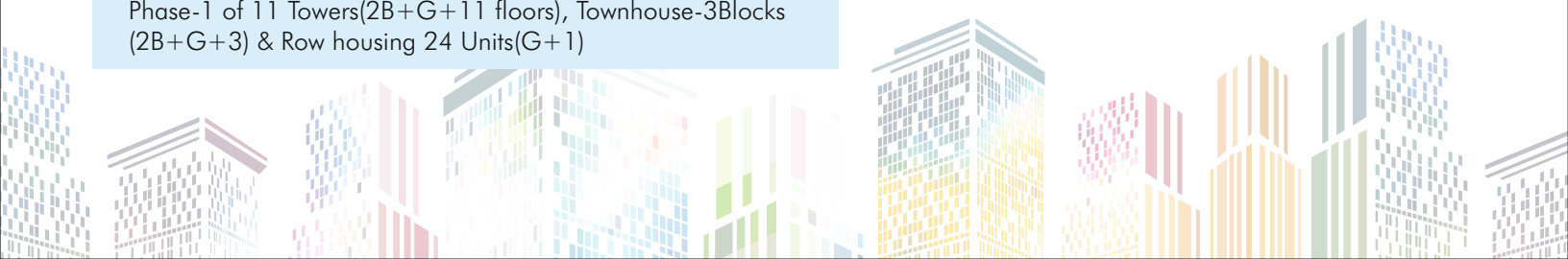
Tata OBLP
Bangalore

Total Built-up Area 10.0 Million Sft
Phase-1 of 11 Towers(2B+G+11 floors), Townhouse-3Blocks
(2B+G+3) & Row housing 24 Units(G+1)



Purvankara Whitehall
Bangalore

Total Built-up Area 5.0 Lakh Sft
(4 Tower+B+G+12 Floors)





Adani Borivali
Mumbai

Total Built-up Area 5.0 Million Sft
(2 Towers (3B+G+5P+51F))



Ajmera Kandivali
Mumbai

Total Built-up Area 2.1 Million Sft
(5 Towers (1B+G+9P+51F))



Silvergroup
Mumbai

Total Built-up Area 2.6 Million Sft
(2B+G+14F)





Trump Tower Hyderabad

Total Built-up Area 1.7 Million Sft
(2Towers/4B+G+64+T)



COMMERCIAL

Projects Handled





Sattva Knowledge Park
Hyderabad

Total Built-up Area 4.6 Million Sft
(4B+GF+25 Ufs)



Divyasree Technopolis
Bangalore

Total Built-up Area 1.1 Million Sft
(1 Tower+3B+G+7 Floor+Terrace)



Sattva Oracle IT Tech park
Bangalore

Total Built-up Area 2.8 Million Sft
(3B+S+9+T (Tower 1), S+9+T (Tower 2 & 3))



KRC IT Park
Chennai

Total Built-up Area 1.6 Million Sft
(3B+G+9 Floors)





NPCI
Mumbai

Total Built-up Area 8.0 Lakh Sft
(5BF+GF+14 UF's+TF)



Boeing
Bangalore

Total Built-up Area 9.92 Lakh Sft
(2B+GF+6 UF's+TF)



NSL IT Park
Bangalore

Total Built-up Area 7.0 Lakh Sft
(3B+GF+11 UF's+TF)



Prestige Techforest
Bangalore

Total Built-up Area 35.8 Lakh Sft
(3B+Stilt+14 UF's+TF)





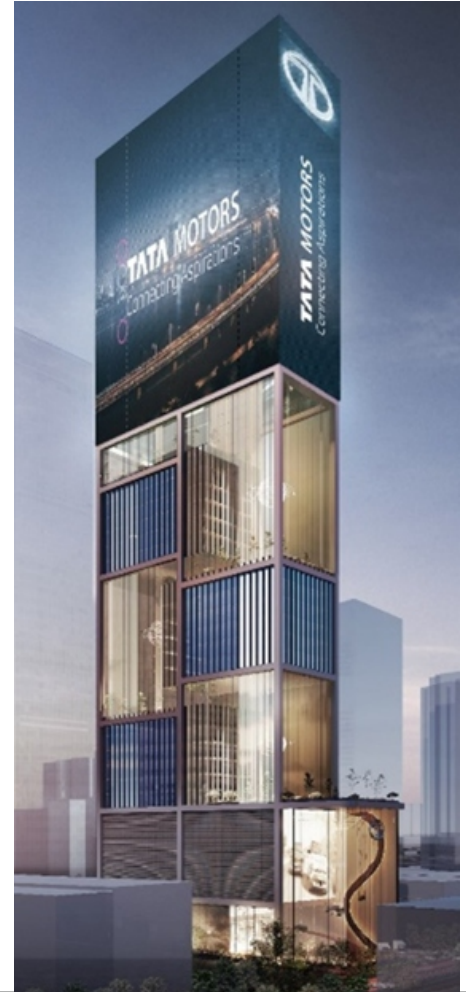
Sattva OMR
Chennai

Total Built-up Area 5.6 Million Sft
(4 Blocks, 3B+GF+18/19 UF's+TF)



Western SiteA
Hyderabad

Total Built-up Area 3.6 Million Sft
(4B+GF+20 UF's+TF)



Tata Motors, Corporate Office
Mumbai

Total Built-up Area 5.0 Million Sft
2BF+GF+6 Stilt +19 Floor+100m
media mesh (200M Height)





Arihant Commercial
Chennai

Total Built-up Area 3.9 Lakh Sft
(B+GF+11 UF's+TF)



IIT - Alumni Block - Institution
Mumbai

Total Built-up Area 1.7 Lakh Sft
(GF+14 F)



Divyashree Technopark
Bangalore

Total Built-up Area 8.82 Lakh Sft
(3BF+ GF + 7UF's + TF)





Rajapushpa West Avenue
Hyderabad

Total Built-up Area 5.0 Million Sft
(2 Towers+5B+G+2S+25 Floors)



Prestige Tech Cloud IT Park
Bangalore

Total Built-up Area 4.2 Million Sft
(2B+G+9 Floors)



GAR CORP
Hyderabad

Total Built-up Area 30 Million Sft
(4 Towers+5B+G+28 Floor)





LSR Tudour
Hyderabad

Total Built-up Area 2.0 Million Sft
(1 Tower+5B+G+19 Floor)



Aparna Technopolis IT Park
Hyderabad

Total Built-up Area 1.9 Million Sft
(2 Tower+3B+G+18 Floors)



Lab Zone - Life Sciences Park
Bangalore

Total Built-up Area 1.0 Million Sft
(1 Tower+2B+G+14 Floors+Terrace)





RMZ Eco World
Bangalore

Total Built-up Area 2.5 Million Sft
(2B+G+10 Floors)



Phoenix B Hub
Chennai

Total Built-up Area 3.0 Million Sft
(2 Towers of 4B+G+29 Floors)



MALL

Projects Handled





Inorbit Mall
Vizag

Total Built-up Area 15.40 Lakh Sft
(2B+GF+2UF's+TF, MLCP- G+6 Floors)



Mall of Bhopal
Bhopal

Total Built-up Area 1.0 Million Sft
(3B+G+5floors+Terrace)



Prestige Forum Mall
Bangalore

Total Built-up Area 1.4 Million Sft
(3B+GF+5UF's +TF)



Phoenix Mall
Bangalore

Total Built-up Area 1.9 Million Sft





Lulu Mall
Trivandrum

Total Built-up Area 2.0 Million Sft
Hotel (G+8), Mall (B+G+3+T), MLCP and Technical Tower



DMSI Hospitality Pvt Ltd
Mysore

Total Built-up Area 5.5 Million Sft
2B+G+4 Floors



MSR Elements Mall
Bangalore

Total Built-up Area 5.0 Million Sft



PVP Square Town Center
Vijayawada

Total Built-up Area 4.0 Lakh Sft





Brigade Mall
Bangalore

Total Built-up Area 3.3 Lakh Sft



Aparna Multiplex
Hyderabad

Total Built-up Area 2.4 Lakh Sft



ETA Mall
Bangalore

Total Built-up Area 6.3 Lakh Sft



Soma Raipur City Center Mall
Raipur

Total Built-up Area 3.6 Lakh Sft



HOTELS

Projects Handled





Taj GVK
Bangalore

Total Built-up Area 3.7 Lakh Sft
(B + GF + 14UF's+ TF)



BAHL Combo Hotels (Taj + Ginger Hotels)
Bangalore

Total Built-up Area 7.2 Lakh Sft
(2B + GF + 11UF's+ TF)



World Hotel
Bhubaneswar

Total Built-up Area 1.0 Lakh Sft





Holiday Inn
Tirupathi

Total Built-up Area 4.8 Lakh Sft



Radison Hotel
Mysore

Total Built-up Area 5.5 Lakh Sft



Hyatt Hotel
Bangalore

Total Built-up Area 6.7 Lakh Sft



Prestige Aloft Hotel
Bangalore

Total Built-up Area 1.5 Lakh Sft





Kalyani Hotel
Bangalore

Total Built-up Area 18.0 Lakh Sft



Novatel
Kerala

Total Built-up Area 1.8 Lakh Sft
2B + Stilt+ 15UF's+ TF



Mayfair Hotels
Tirupathi

Total Built-up Area 2.1 Lakh Sft



INSTITUTIONS

Projects Handled





NPS School
Bangalore

Total Built-up Area 4.0 Lakh Sft
(B+G+4UF's+TF)



RV University
Mysore

Total Built-up Area 5.0 Million Sft
(G+5/8+T)



MGM School
Hyderabad

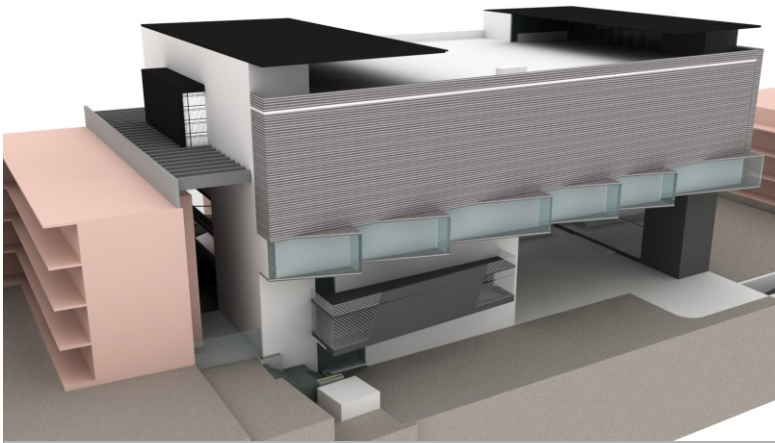
Total Built-up Area 10.0 Lakh Sft



My Home Meru School
Hyderabad

Total Built-up Area 2.2 Lakh Sft





BNMIT
Bangalore

Total Built-up Area 0.8 Lakh Sft



CARE Engineering Collage
Trichy

Total Built-up Area 1.5 Lakh Sft



AMRITA University
Andhra Pradesh

Total Built-up Area 1.0 Million Sft



HOSPITALS

Projects Handled





**Manipal Hospital
Bangalore**

Total Built-up Area 3.5 Lakh Sft



**Yashoda Hospital
Bangalore**

Total Built-up Area 1.0 Million Sft



**AIIMS Hospital
Hyderabad**

Total Built-up Area 12.12 Lakh Sft



**Apollo Hospital
Hyderabad**

Total Built-up Area 6.5 Lakh Sft





IQ City Hospital
Durgapur

Total Built-up Area 3.5 Lakh Sft



Sakra World Hospital
Bangalore

Total Built-up Area 1.7 Lakh Sft



Agadi Sunrise Hospital
Bangalore

Total Built-up Area 1.7 Lakh Sft



Sparsh Hospital
Bangalore

Total Built-up Area 1.2 Lakh Sft





Yashoda Multi Speciality Hospital
Hyderabad

Total Built-up Area 1.6 Lakh Sft



Global Hospitals & Health City (GHC)
Chennai

Total Built-up Area 1.5 Lakh Sft



DATA CENTER

Projects Handled





SIFY Data Centre
Mumbai

Total Built-up Area 5.4 Lakh Sft



Sify Data Center
Noida

Total Built-up Area 6.0 Lakh Sft



TATA Communications Ltd
Chennai

Total Built-up Area 2.5 Lakh Sft



Salarpuria Sattva Group
Bangalore

Total Built-up Area 3.0 Lakh Sft



PUBLIC SECTOR

Projects Handled



Hospital



Museum



Police



Church



Government



Theatre



Skydeck



Public experience, Five-star Hotel & Core Service





Client

CRDA- Government of
Andhra Pradesh

Architect

Fosters + Partners,
London

SMEP Principal Consultants

DesignTree Service
Consultants Pvt Ltd

Volume

INR 4000Cr Approx

Size

650,000 Sq.m (Whole)
459,000 Sq.m (Tower
Only)

Completion

End of 2019

Features

First 200mt. + tall
building in South India
First Dia Grid
Structure being built in
India

Secretariat & HOD Buildings, Capital Region Development Authority CRDA - Government of Andhra Pradesh Amaravati, Andhra Pradesh



Patented Twin lift technology being used for the first time in India for an efficient vertical transportation. Central RCC core is connected with metal deck slabs. And on the periphery connections to the Dia Grid member creating a rigid diaphragm. This providing a column free spans of up to 15mt. for a hindrance free utilization of the office space

PROJECT DESCRIPTION

An iconic building env is aged as part of the Green field capital that is developed by the Government of Andhra Pradesh in Amaravati.

The secretariat and HOD buildings that are part of the development comprise of five towers in all with a similar floor plate. The buildings cater to the entire government staff that form part of the secretariat and various administration departments of the government. Four of the five towers stand tall at a height 178mt. And the fifth tower that is also the chief ministers' office stands tall at 220mt. along with towers the complex also houses 08 amenity blocks that cater to the general requirements of the staff- public spaces, convention halls, meeting spaces, citizen grievance halls etc. And recreation facilities for the staff with swimming pools, creche and other such amenities.

Total area of development stands at 7Million Sq.Ft with the Tower area comprising about 5Million Sq.Ft. Another important feature for the building is the external façade that is also a structural element, which aids in dissipating the lateral loads such as wind and seismic forces.

Scope of work also included a services building for mechanical and electrical services.

As part of the primary consultants for structural and MEP works of the consortium that included various reputed consultants, the design concept ualization, schematic submissions for structural form and recommendations for the most suited and efficient structural and MEP solutions were carried out from the team at DesignTree Service Consultants.



**Client**

CRDA- Government
of Andhra Pradesh

PMC

Turner Project
Management India
Pvt. Ltd

**SMEP Peer
Review**

Consultant
DesignTree Service
Consultants Pvt Ltd

Volume

INR 450 Cr Approx

Size

Total Built up area
12,49,321 Sft.
(which includes
building with 2
basements +
ground floor + 33
upper floors +
terrace)

**NRT ICON - ANDHRA PRADESH NON-RESIDENT TELUGU SOCIETY
(Residential cum Office cum Retail Complex) Rayapudi village,
Guntur District, Andhra Pradesh**

NRT Icon is 33-storeyed building, which is the first direct investment project by the Andhra Pradesh Non-Resident Telugu (APNRT) Society. The high-rise building, which will be developed as a mixed-use zone with both commercial, residential and recreational area, will come up near the Amaravati Government Complex (AGC) in Rayapudi.



**Client**

DIRECTOR GENERAL
PROJECT SEABIRD
IHQ MoD(NAVY),
NEW DELHI

Contractor

Shapoorji&Paloonji
Constructions

SMEP Principal

Consultant (
Appointed by SPCL)
DesignTree Service
Consultants Pvt Ltd

Architect

Thomas Associates

Volume

INR 800 Cr Approx

Size

Total Built up area
35,00,000 sft

SEABIRD PHASE II @ NAVAL BASE, KARWAR

Seabird – Phase IIA. The largest naval infrastructure project for India, it involves creation of a naval base at Karwar on the west coast of India. Upon completion, this \$3 billion program and effort will provide the Indian Navy with its largest naval base on the west coast and also the largest naval base east of the Suez Canal.





NMDC

Client
NMDC

Location
kirandul, chattisgarh

Contractor

SMEP Principal

Architect

Volume



Size

Type 3-1 stilt/ground floor + 10 upper floors+ terrace

Type 4-1 stilt/ground floor + 8 upper floors

Type 5-1 stilt/ground floor + 7 floors+ terrace

Total Built up area 6,61,459 sqft



WARE HOUSE & INDUSTRIES

Projects Handled





Vijay Gems & Jewels
Bangalore

Total Built-up Area 5.2 Lakh Sft



Pepsico Merck Millipore

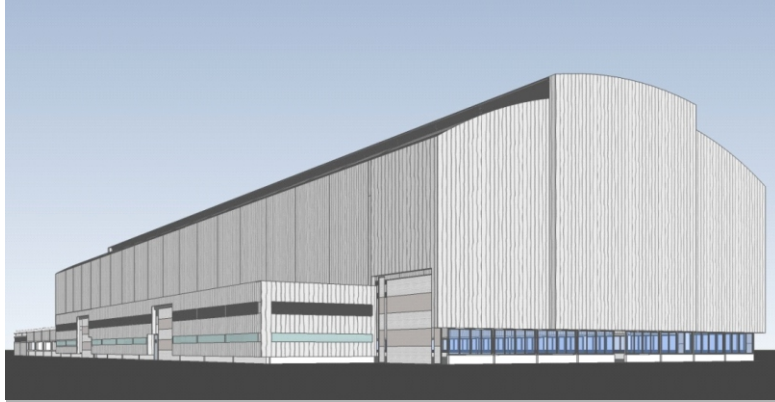
Total Built-up Area 2.0 Lakh Sft



Triveni Turbines
Bangalore

Total Built-up Area 3.0 Lakh Sft





TDPS
Bangalore

Total Built-up Area 0.5 Lakh Sft



Maytas Warehousing
Hyderabad

Total Built-up Area 6.5 Lakh Sft



Maytas Logistics & Warehousing Campus
Hyderabad

Total Built-up Area 17.5 Lakh Sft



KRC Warehouse
Shamshabad

Total Built-up Area 2.5 Lakh Sft



IGBC PROJECTS

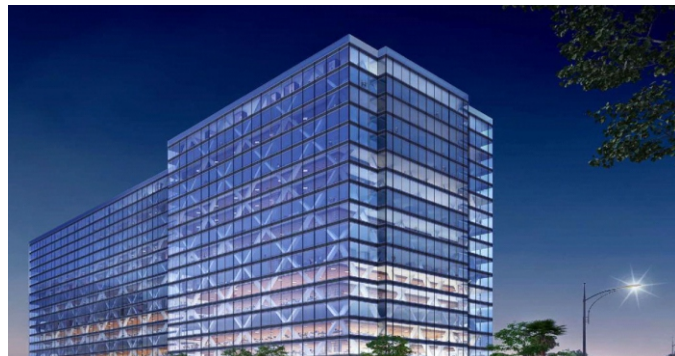
Projects Handled





GAR CORP
Hyderabad

Total Built-up Area 3.1 Million Sft



Garden City Verde
Bangalore

Total Built-up Area 2.3 Million Sft



Sumadhura IT Building
Bangalore

Total Built-up Area 1.0 Million Sft



Sify Data Center
Noida

Total Built-up Area 6.0 Lakh Sft





CIGNUS - TOWER 1
Bangalore

Total Built-up Area 5.7 Lakh Sft



Dell Wyse @ Zonasha
Bangalore

Total Built-up Area 52.0 Thousands Sft



DBS ASIA HUB 2
Hyderabad

Total Built-up Area 65,000 Sft



Adarsh Greens
Bangalore

Total Built-up Area 4.7 Lakh Sft





Adarsh Greens Residential
Bangalore

Total Built-up Area 1.7 Million Sft



LSR Tudour
Hyderabad

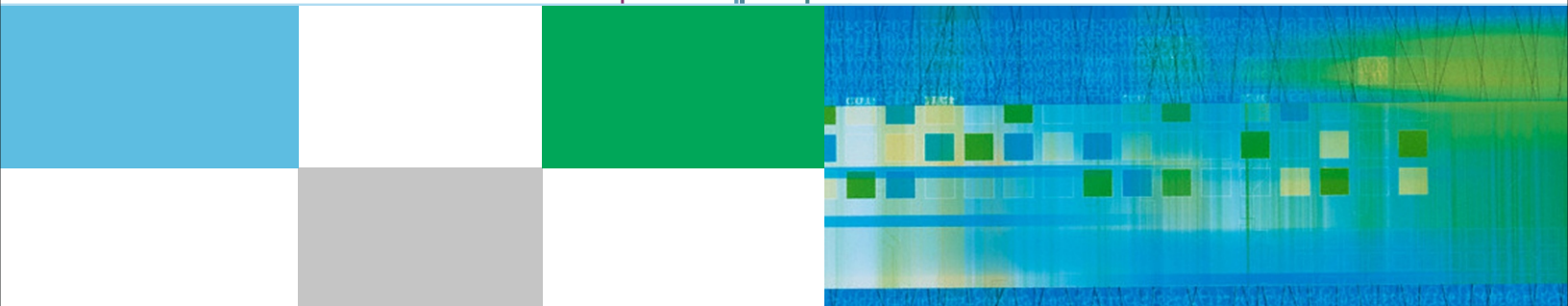
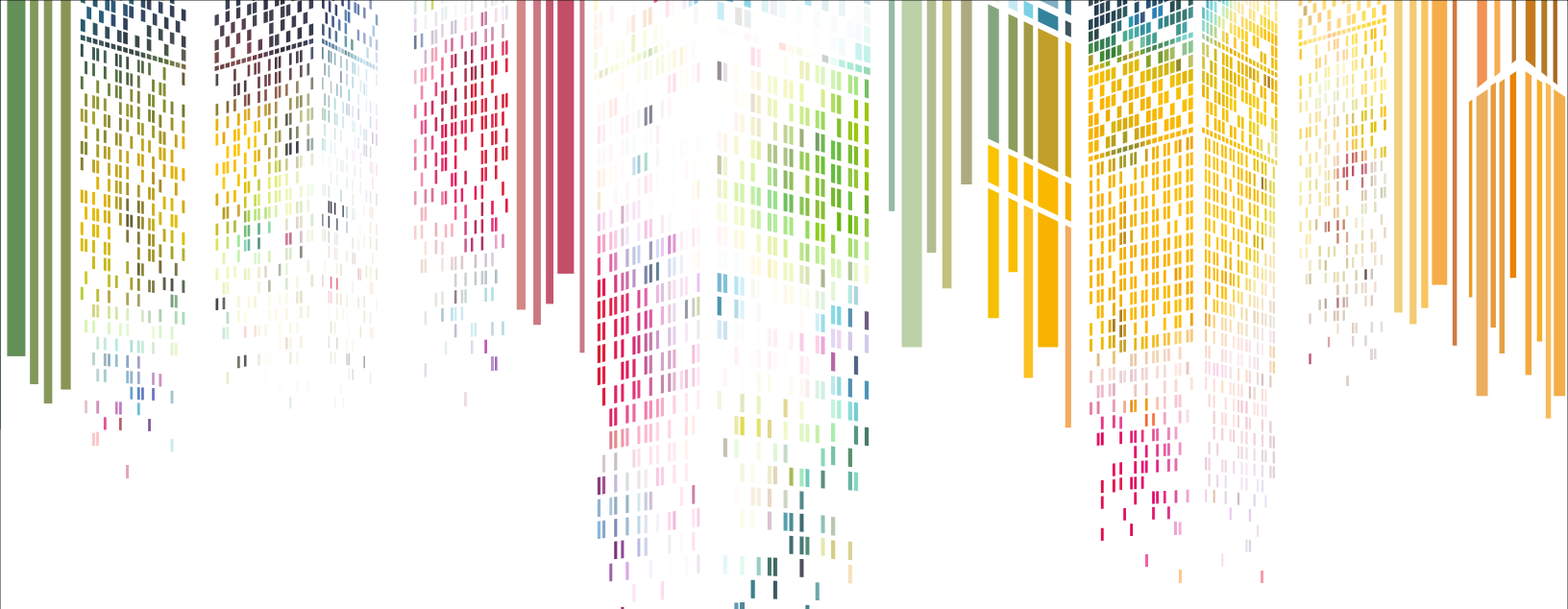
Total Built-up Area 2.0 Lakh Sft



Mahaveer Crystal Garden
Hyderabad

Total Built-up Area 19.5 Lakh Sft





Corp. Office : # 64/9, Kembhathalli Main Road
J. P. Nagar, 9th Phase, Bengaluru - 560083. INDIA
T : +91 80 7199 5481
E : info@designtreeconsultants.com
www.designtreeconsultants.com

Branch Office :
10, 3rd Floor, G. J. Complex, 1st Main Road
CIT Nagar, Chennai - 600035
T : +91 44 2482 5397
E : chennai@designtreeconsultants.com

Branch Office :
6, 2nd Floor, Parkside Road, Manoharpukur
Kalighat, Kolkata - 700026.
T : + 91 98317 80580
E : kolkata@designtreeconsultants.com

Branch Office :
904A, 9th Floor, City Tower
Boat Club Road, Bund Garden
Sangamvadi, Pune – 411001
T : + 91 99008 26321
E : pune@designtreeconsultants.com

Branch Office :
5A, 5th Floor, Vaishnavi Cymbol
Nanakramguda Financial District
Hyderabad - 500032
T : + 91 70939 41222
E : hyderabad@designtreeconsultants.com

Branch Office :
B 710, Kanakia Wall Street
Andheri-Kurla Road, Chakala Andheri (East)
Mumbai - 400093
T : + 91 90046 65220
E : mumbai@designtreeconsultants.com

Branch Office :
52-1/1-2A, 3rd Floor, Arka Plaza
Service Road, Veterinary Colony,
Vijayawada - 520008
T : + 91 96860 23008
E : vijayawada@designtreeconsultants.com